



I-11 & Intermountain West Corridor Study


Study Overview



In partnership with




Public Online Feedback, February 2014



Presentation Format and Feedback Opportunity


- This presentation provides an overview of the I-11 and Intermountain West Corridor Study.
- After viewing this presentation, participants can learn more about the latest analysis completed for the Corridor by reviewing segment-specific presentation(s) and providing feedback using an online questionnaire.
- The online questionnaires will be available through February 28, 2014.

2



Presentation Outline

- Project overview and background
- Evaluation process
- Universe of alternative corridors considered
- How you can learn more about segment-specific analysis
- How you can provide feedback





3



Project Overview

Background


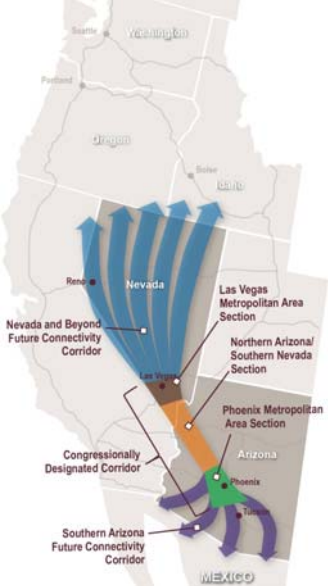
- Federal transportation authorizations identified high priority corridors
- CANAMEX Corridor designated (1995)
- Corridor advanced through:
 - MAG Hassayampa and Hidden Valley Framework Studies (2006 – 2009)
 - Building a Quality Arizona (bqAZ, 2010)
 - NDOT/RTCSNV Boulder City Bypass (2005 and ongoing)
- CANAMEX Corridor along US 93 between Phoenix and Las Vegas designated as future “I-11” in MAP-21 (2012)
- Arizona and Nevada DOTs signed an interagency agreement and begin a joint planning study (2012+)

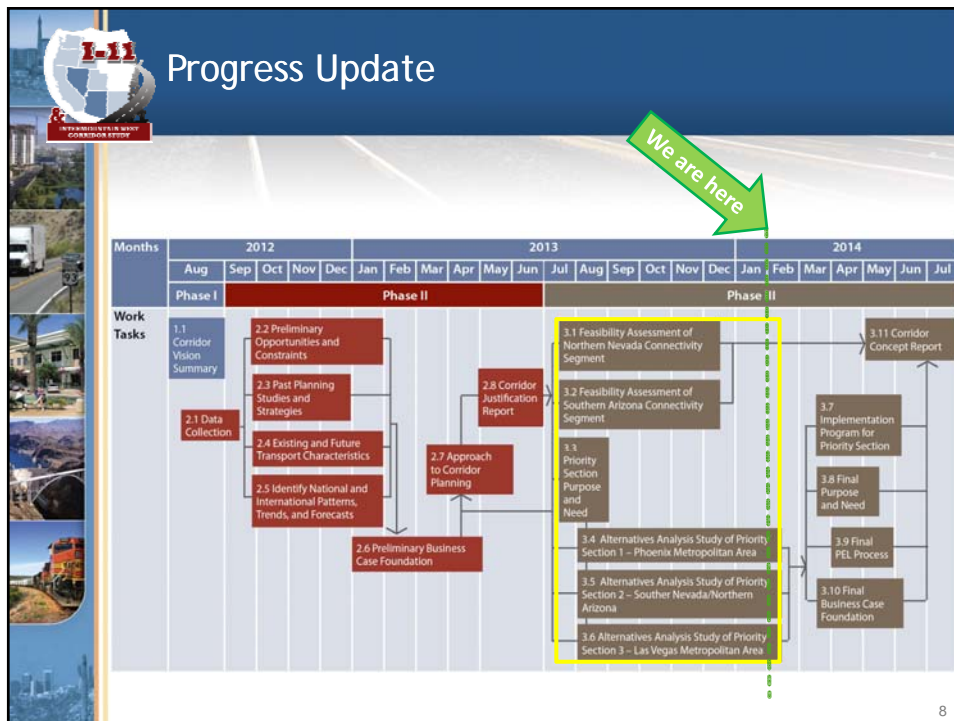
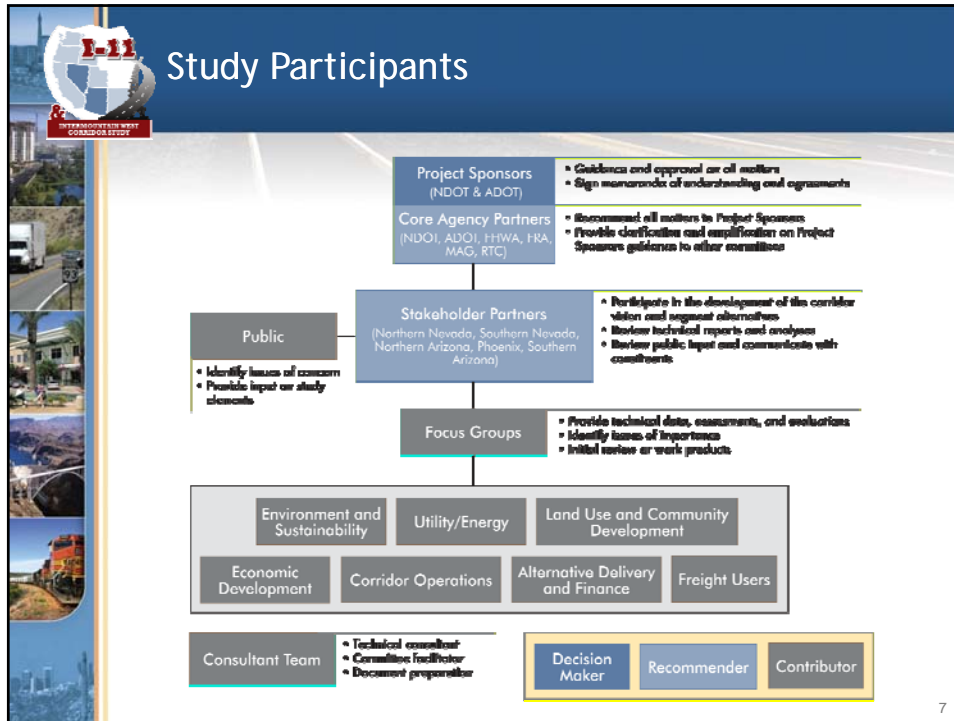
5

What Does this Study Entail?

- Two levels of investigation:
 - Detailed corridor planning between Las Vegas and Phoenix
 - High-level visioning from Las Vegas to Canada, and from Phoenix to Mexico
- Multimodal consideration:
 - Interstate/highway, freight rail, passenger rail, and public transportation
 - Power, telecommunication, etc.

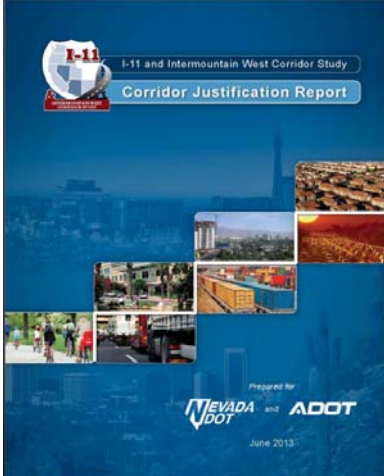
6



I-11 Study Deliverables

- ✓ Corridor Vision Summary
- ✓ Corridor Justification Report
- ✓ Existing Natural and Built Environment
- ✓ Level 1 Evaluation Results Summary
- ✓ **DRAFT** Level 2 Preliminary Evaluation Results Summary

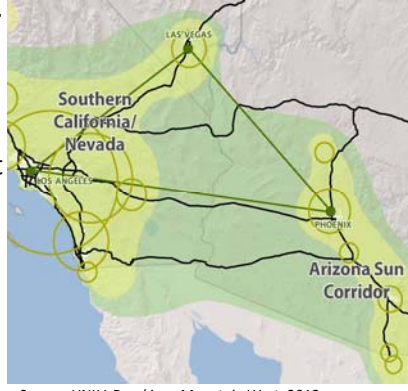
All documents available on website



9

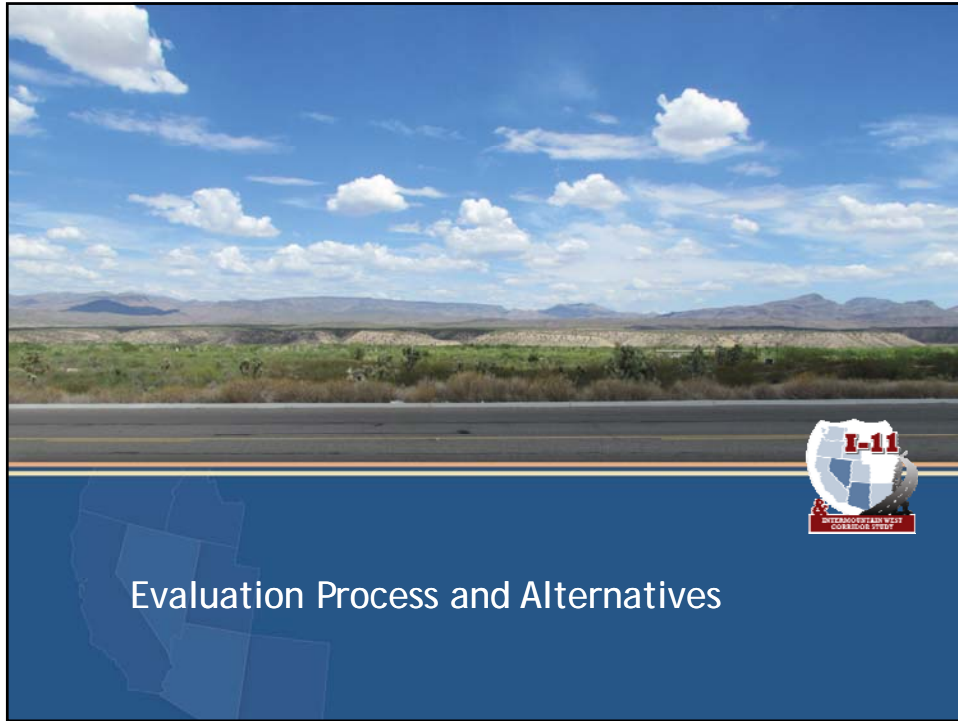
I-11 Key Justifications Identified

- Integrate the economies of the Southwest Triangle megaregion.
- Capitalize on Mexico's growing role in North American manufacturing/trade.
- Support economic development initiatives of Arizona and Nevada.
- Prevent congestion from crippling economic competitiveness.
- Comply with enabling federal legislation.



Source: UNLV, Brookings Mountain West, 2012

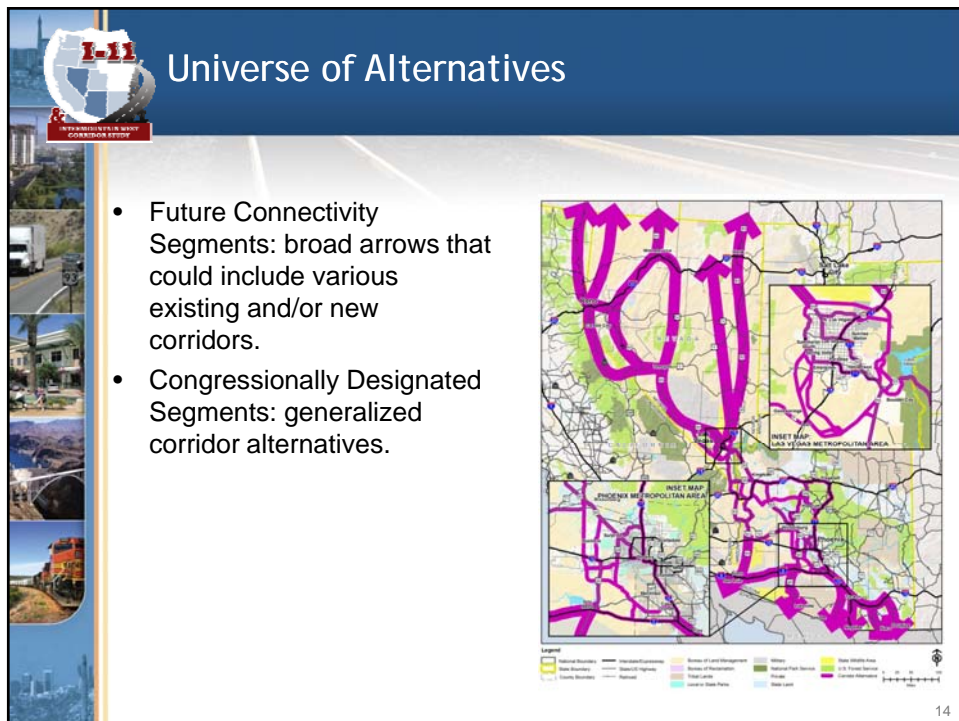
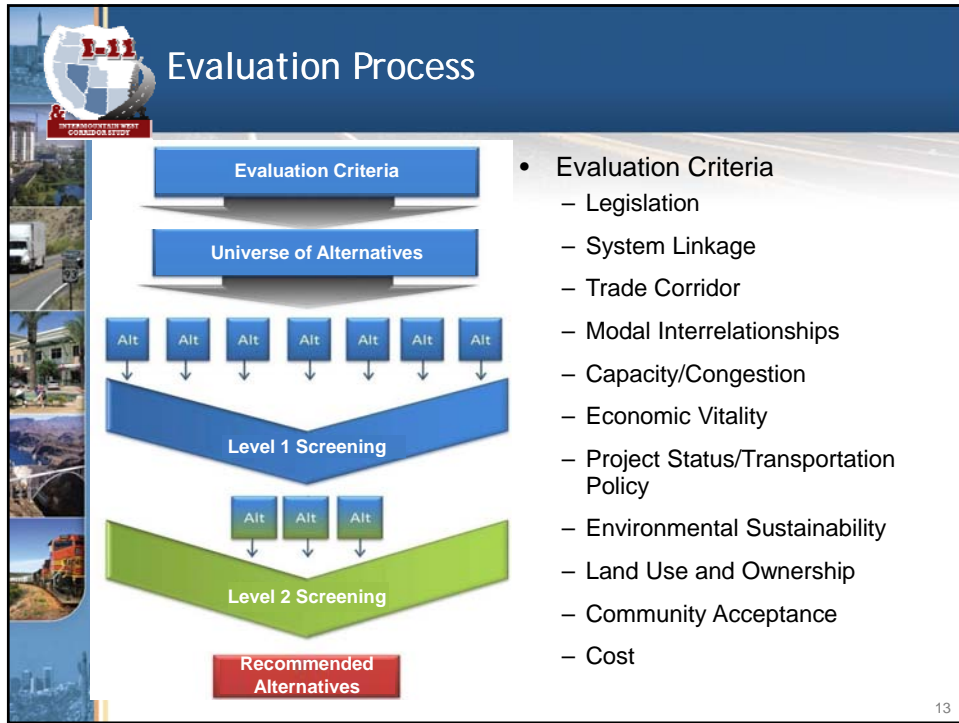
10

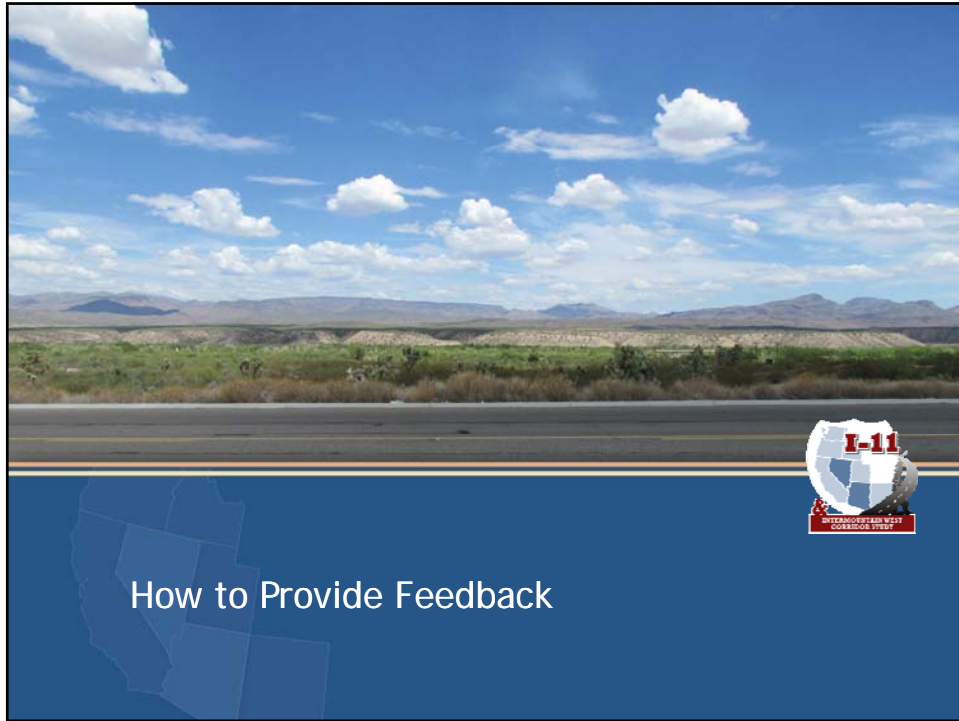


Evaluation Process

- “Alternative” is a corridor containing one or more modes (e.g., highway, rail)
 - Alternatives could consist of a new or existing transportation facility, or a combination of both
- Alternatives were evaluated using criteria that was measured
 - Qualitatively in Level 1 for the full corridor
 - Mostly quantitatively in Level 2 for the Congressionally Designated Corridor

12





How to Provide Feedback

- Learn more about the latest analysis completed by reviewing segment-specific presentation(s) and providing feedback using the online questionnaires.
- The questionnaires will be available online through February 28, 2014.
- Comments are always welcome throughout the study.

16



Project Contacts:

<p>Sandra Rosenberg, PTP Nevada Department of Transportation 1263 South Stewart Street Carson City, NV 89712 srosenberg@dot.state.nv.us (775) 888-7241</p>	<p>Michael Kies, PE Arizona Department of Transportation 206 S. 17th Avenue Phoenix, AZ 85007 mkies@azdot.gov (602) 712-8140</p>
---------------------------------------------------------------------------------------------------------------------------------------------------------------------------------------	-------------------------------------------------------------------------------------------------------------------------------------------------------------

