



I-11 & Intermountain West Corridor Study

## Southern Arizona Future Connectivity Segment


Level 1 Evaluation Recommendations



In partnership with




Public Online Feedback, February 2014



## Presentation Format and Feedback Opportunity


- This presentation provides an overview of the latest analysis completed for the Southern Arizona Future Connectivity Segment.
- After viewing this presentation you can provide feedback using an online questionnaire designed for this segment.
- A presentation providing a thorough overview of the I-11 and Intermountain West Corridor Study is available.
- The online questionnaire will be available through February 28, 2014.

2





## Presentation Outline

- Project overview and background
- Evaluation process
- Alternatives included in Level 1 screening
- Level 1 Recommendations
- How you can provide feedback



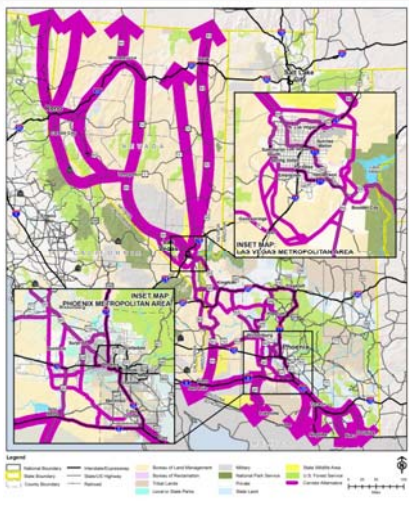
3



## Alternatives and the Evaluation Process

## I-11 Intermountain West Corridor Study Universe of Alternatives

- Future Connectivity Segments: broad arrows that could include various existing and/or new corridors.
- Congressionally Designated Segments: generalized corridor alternatives.




Legend

County Boundaries	State Boundaries	Urban Growth Boundaries	Boundaries of Land Management	Water	State Wildlife Area
County Boundaries	State Boundaries	Boundaries of Planning	Boundaries of Planning	Water	State Wildlife Area
County Boundaries	State Boundaries	Boundaries of Planning	Boundaries of Planning	Water	State Wildlife Area

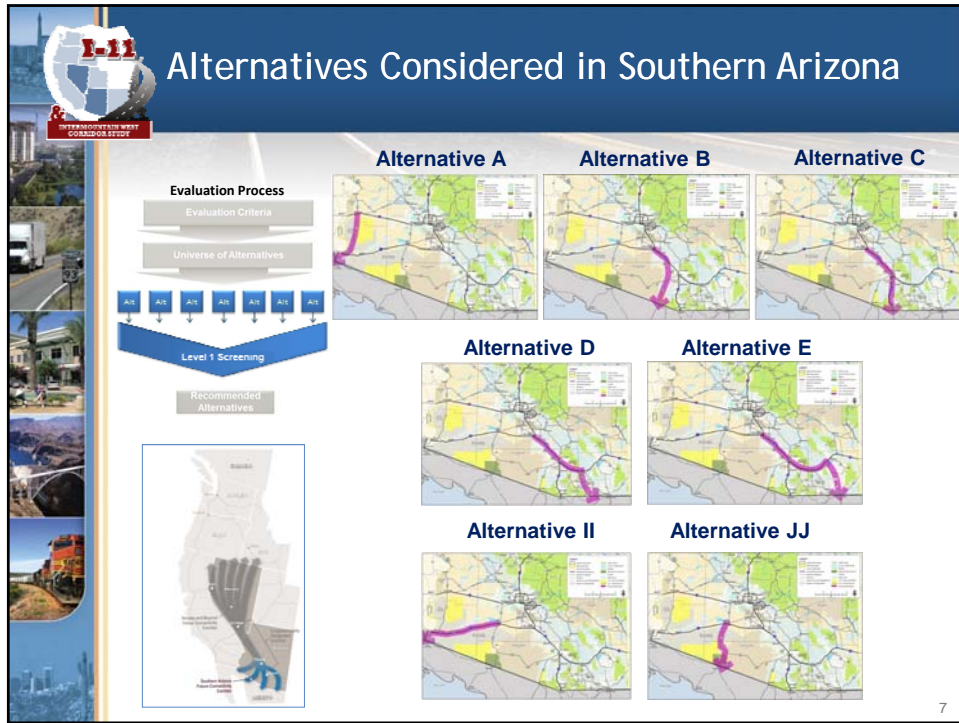
5


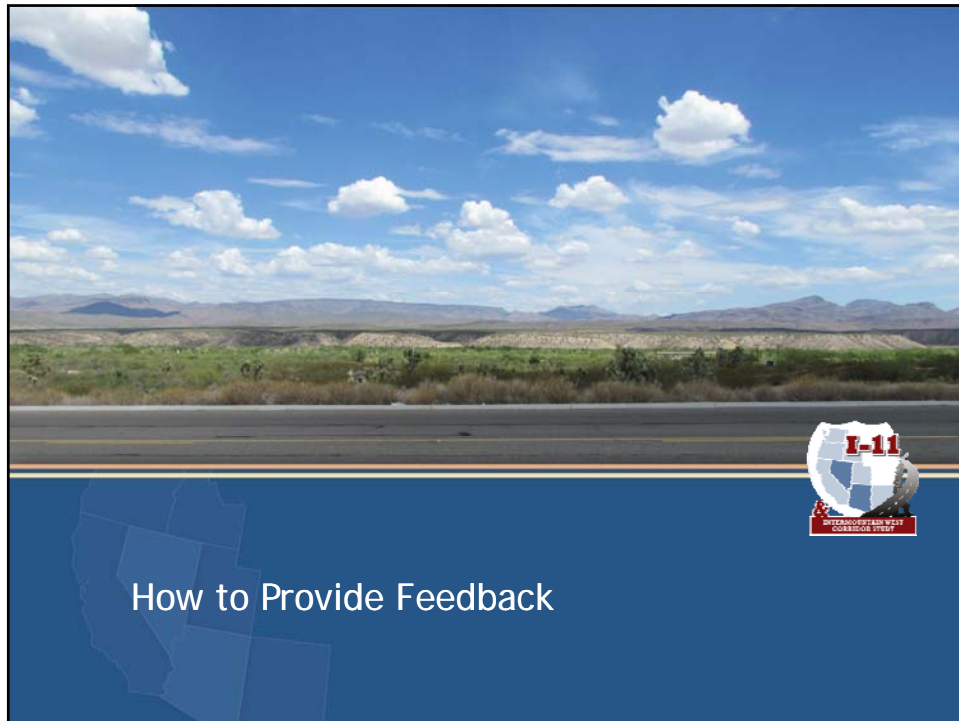
## I-11 Intermountain West Corridor Study Evaluation Process

- “Alternative” is a corridor containing one or more modes (e.g., highway, rail)
  - Alternatives could consist of a new or existing transportation facility, or a combination of both
- Alternatives were evaluated using criteria that was measured qualitatively




6





## How to Provide Feedback

- Complete online questionnaire regarding this Corridor segment.
- Review other Corridor segment analysis and complete corresponding questionnaires.
- The questionnaires will be available online through February 28, 2014.
- Comments are always welcome throughout the study.



10



**Project Contacts:**

<p><b>Sandra Rosenberg, PTP</b> Nevada Department of Transportation 1263 South Stewart Street Carson City, NV 89712 srosenberg@dot.state.nv.us (775) 888-7241</p>	<p><b>Michael Kies, PE</b> Arizona Department of Transportation 206 S. 17th Avenue Phoenix, AZ 85007 mkies@azdot.gov (602) 712-8140</p>
---	---

